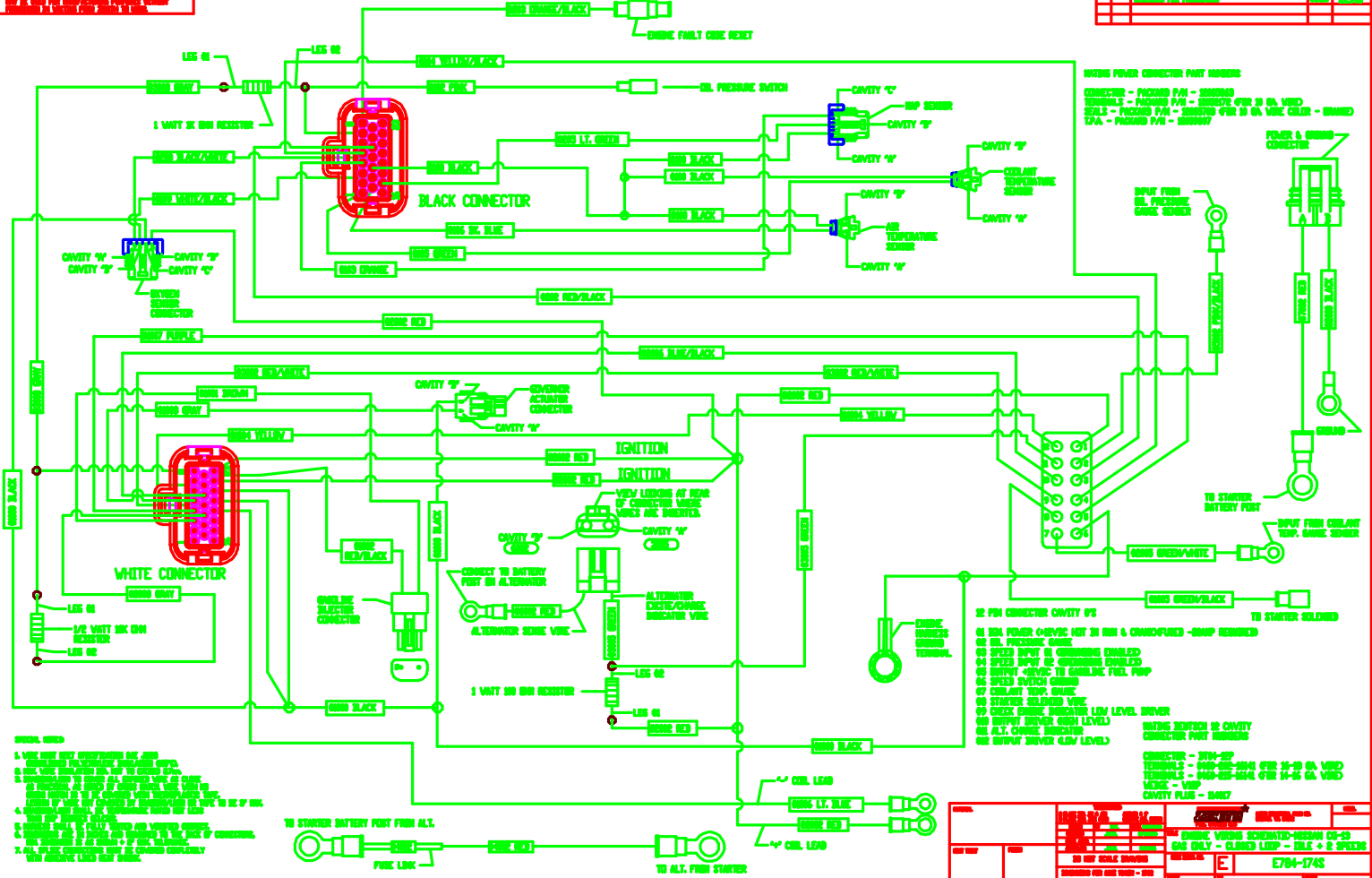


1. ALL WIRING MUST BE DONE IN ACCORDANCE WITH THE WIRING SCHEMATIC AND THE WIRING MANUAL. 2. ALL WIRING MUST BE DONE IN ACCORDANCE WITH THE WIRING SCHEMATIC AND THE WIRING MANUAL. 3. ALL WIRING MUST BE DONE IN ACCORDANCE WITH THE WIRING SCHEMATIC AND THE WIRING MANUAL. 4. ALL WIRING MUST BE DONE IN ACCORDANCE WITH THE WIRING SCHEMATIC AND THE WIRING MANUAL. 5. ALL WIRING MUST BE DONE IN ACCORDANCE WITH THE WIRING SCHEMATIC AND THE WIRING MANUAL. 6. ALL WIRING MUST BE DONE IN ACCORDANCE WITH THE WIRING SCHEMATIC AND THE WIRING MANUAL. 7. ALL WIRING MUST BE DONE IN ACCORDANCE WITH THE WIRING SCHEMATIC AND THE WIRING MANUAL. 8. ALL WIRING MUST BE DONE IN ACCORDANCE WITH THE WIRING SCHEMATIC AND THE WIRING MANUAL. 9. ALL WIRING MUST BE DONE IN ACCORDANCE WITH THE WIRING SCHEMATIC AND THE WIRING MANUAL. 10. ALL WIRING MUST BE DONE IN ACCORDANCE WITH THE WIRING SCHEMATIC AND THE WIRING MANUAL.

NO.	DESCRIPTION	QTY.	UNIT
1	WIRING SCHEMATIC	1	SET
2	WIRING SCHEMATIC	1	SET
3	WIRING SCHEMATIC	1	SET
4	WIRING SCHEMATIC	1	SET
5	WIRING SCHEMATIC	1	SET
6	WIRING SCHEMATIC	1	SET
7	WIRING SCHEMATIC	1	SET
8	WIRING SCHEMATIC	1	SET
9	WIRING SCHEMATIC	1	SET
10	WIRING SCHEMATIC	1	SET



WIRING POWER CONNECTOR PART NUMBERS  
 CONNECTOR - PACKAGED P/W - 30PIN-001  
 TERMINALS - PACKAGED P/W - 30PIN-001 FOR 30 GA. WIRE  
 TERLS - PACKAGED P/W - 30PIN-001 FOR 30 GA. WIRE COLOR - BRNED  
 TPA - PACKAGED P/W - 30PIN-001

- 01 30 PIN CONNECTOR CAVITY #2
- 02 30 PIN POWER (+) WIRE HOT IN RUN & CHARGED/FUSED - 30AMP RESISTOR
- 03 01 PRESSURE SWITCH
- 04 SPEED INPUT IN OPERATING DISABLED
- 05 SPEED INPUT IN OPERATING DISABLED
- 06 DRIVE (+) WIRE TO CARBURIC FUEL PUMP
- 07 SPEED SWITCH COMMON
- 08 COOLANT TEMP. SENSE
- 09 STARTER RELEASED WIRE
- 10 INPUT DRIVER COMMON LEVEL
- 11 ALT. CHARGE INDICATOR
- 12 INPUT DRIVER LEVEL LEVEL

- 1. WIRE AWAY FROM OPERATOR OF THE...
- 2. WIRE AWAY FROM OPERATOR OF THE...
- 3. WIRE AWAY FROM OPERATOR OF THE...
- 4. WIRE AWAY FROM OPERATOR OF THE...
- 5. WIRE AWAY FROM OPERATOR OF THE...
- 6. WIRE AWAY FROM OPERATOR OF THE...
- 7. WIRE AWAY FROM OPERATOR OF THE...
- 8. WIRE AWAY FROM OPERATOR OF THE...
- 9. WIRE AWAY FROM OPERATOR OF THE...
- 10. WIRE AWAY FROM OPERATOR OF THE...

NO.	DESCRIPTION	QTY.	UNIT
1	WIRING SCHEMATIC	1	SET
2	WIRING SCHEMATIC	1	SET
3	WIRING SCHEMATIC	1	SET
4	WIRING SCHEMATIC	1	SET
5	WIRING SCHEMATIC	1	SET
6	WIRING SCHEMATIC	1	SET
7	WIRING SCHEMATIC	1	SET
8	WIRING SCHEMATIC	1	SET
9	WIRING SCHEMATIC	1	SET
10	WIRING SCHEMATIC	1	SET

CONNECTOR - 30PIN-001  
 TERMINALS - 30PIN-001 FOR 30 GA. WIRE  
 TERMINALS - 30PIN-001 FOR 30 GA. WIRE  
 TERLS - 30PIN-001 FOR 30 GA. WIRE  
 TPA - 30PIN-001 FOR 30 GA. WIRE

7894-174S

